



ROWING DIRECTIONS & GUIDE FOR COXES

Eastney Cruising Association Gig Section The Cockleshell Challenge

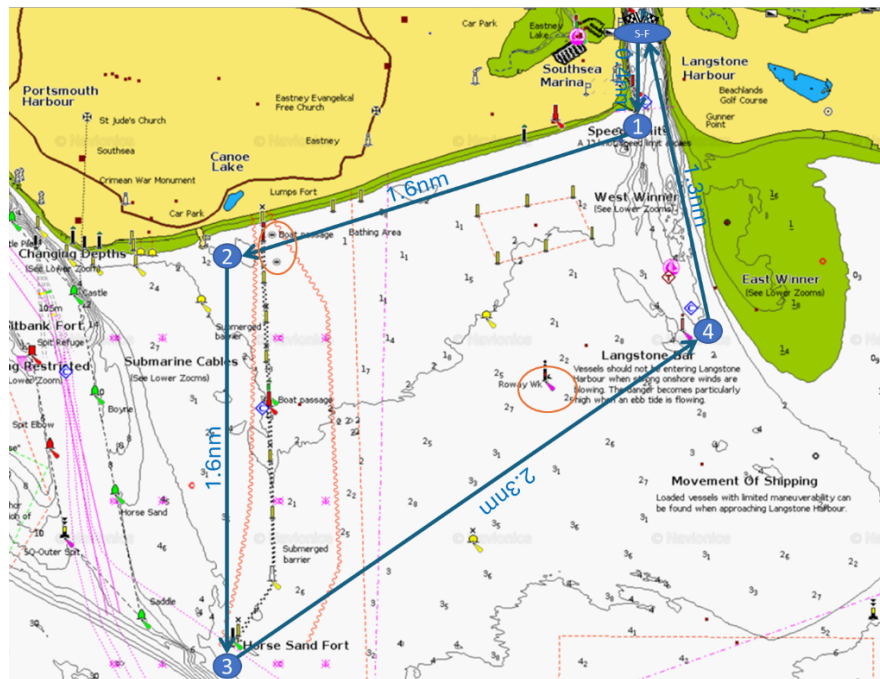


Figure 1 – Standard Anticlockwise Course (on Admiralty Chart)

SUMMARY:

The Cockleshell Challenge course is approximately 7.2 nautical miles (nm) long. The guide time for completion of the course is 1 hour 45 minutes.

The race starts (and finishes) at the ECA – Hayling Island start line at the entrance to Langstone Harbour. The start line is marked by two orange triangles to the flagpole at the Race Officer's hut at the ECA Clubhouse.

After heading south to the harbour entrance [1], the boats head west alongside Southsea Beach to the Small Boat Channel (SBC) [2] through the WW2 submarine barrier. On this leg, on the starboard side you will pass Lumps Fort where the Cockleshell Heroes of WW2 trained for Operation Frankton, the December 1942 raid by canoe-borne British commandos on shipping in Bordeaux Harbour.

After the SBC, rowers will then head south on the westward side of the barrier to Horse Sand Fort (HSF) [3], one of Palmerston's follies.

Rowers will leave the HSF to their portside and then the course runs in an ENE direction towards Langstone Bar/Langstone Fairway Mark (LFM) [4].

A final turn, leaving LFM to port, brings the rowers on the last leg back to the finish line triangles at the ECA flagpole.

Follow these guidelines as far as possible, not just the boat in front of you!



ROWING DIRECTIONS & GUIDE FOR COXES

TIMETABLE:

The following general outline timetable will apply subject to annual tides:

Safety/Cox briefing:	1000hrs
General Briefing:	1030hrs
Planned Start Time:	1100hrs

The start times will be staggered for racing convenience and safety.

The above timetable may be altered subject to events arising near or on the race day.

PREDICTED TIDES:

Predicted tides will be neaps and the times at Southsea, Portsmouth will be:

HW	06:41	4m
LW	11:42	1.6m
HW	19:29	4.2m

Anticipated Tidal Streams:

The race starts on the last of the ebb tide. Coxes will experience a weak tidal stream carrying them south onto the start line.

Coxes should be aware that, on the southbound leg from the SBC to HSF, the tidal stream will set them towards the concrete submarine barrier.

For the rest of the course until the final northbound stretch (from LFM as below), there will be a weak, easterly tidal stream.

On the last leg, from LFM to the finish line, boats will have the tide with them. Those towards the back of the field will get more help than the leading boats.


WEATHER:

Weather conditions may require changes on the day. If necessary, we shall set a course of about the same length inside Langstone Harbour (see Page 5 below).

DETAILED INSTRUCTIONS:






Coxes must carry a portable VHF marine radio. Race control will be on Channel 10 or as advised at the event briefing.

Coxes must wear a personal buoyancy aid (lifejacket) and personal buoyancy aids must be carried (or optionally worn) by each person/crew on the boat.

Stage	Description	Marker/Guide
START	<p>START at the ECA, heading South down the Langstone Channel.</p> <p>Start line is marked by two orange triangles by the flagpole at the ECA Clubhouse Start Hut.</p> <p>a) <i>The bow of the boat MUST stay behind the start line.</i></p>	<p>Yellow Triangles</p>  <p>START Line</p>





ROWING DIRECTIONS & GUIDE FOR COXES

Stage	Description	Marker/Guide
	<p>b) Large dredgers use this channel. Keep a lookout ahead and astern and keep clear of them.</p> <p>c) Keep well clear of the fishing jetty to avoid conflict with anglers and clear of the storm water outfall round the corner (see 1a below). Keep them both to starboard.</p>	<p style="text-align: center;">Fishing Jetty</p>  <p style="text-align: center;">Keep Clear</p>
1a	<p>Southsea Beach Leg. Just past the Jetty on the western side of the Harbour entrance, turn west, leave the conspicuous Outflow Red Mark to starboard.</p> <p>a) Make a mental note of the red and white Langstone Bar/Fairway Mark (looks black from this distance) to seaward. It will be a turning point [4] on the return leg.</p>	<p style="text-align: center;">Outflow Red Mark</p>  <p style="text-align: center;">Leave to Stbd</p>
1b	<p>Head along Southsea Beach towards South Parade Pier.</p> <p>a) Make a mental note of the red and black Roway Mark to the south of you. It will be helpful on the return leg.</p> <p>b) The Port and Starboard marks of the Small Boat Channel (SBC) will come into sight to your left of the pier.</p> <p>c) Keep offshore of the yellow swimming area buoys that are about 50m off shore. Also, beware of small fishing floats.</p> <p>d) The SBC is narrow. No overtaking and keep one boat length on either side of the gap.</p>	<p style="text-align: center;">SBC on LW</p>  <p style="text-align: center;">Barriers Blocks P & S of SBC</p>
2	<p>SBC to HSF. Pass through the SBC and turn south towards Horse Sand Fort (HSF).</p> <p>a) See note about tidal stream.</p> <p>b) After about half-way, you will pass the Main Passage through the barrier on your port side.</p> <p>c) You have right of way over power vessels coming through the gap from the East but do not count on it. Expect fast, unobservant traffic from both directions.</p> <p>d) There is restricted room to manoeuvre, particularly for sailing boats. You are advised to keep a good 200 yards off.</p>	<p style="text-align: center;">Dolphin & Stbd Pile Barrier Main Passage</p>  <p style="text-align: center;">Look Port & Stbd for Fast Power Boats</p>
3	<p>Continue to Leave HSF to Port. Turn to the East round HSF. You are briefly on the edge of the main shipping channel.</p> <p>a) Keep an eye out for large container ships in the main channel towards Southampton and for ferries leaving Portsmouth.</p> <p>b) You are not in danger of collision but big ships can cause a substantial wake 10 minutes or so after they pass.</p>	<p style="text-align: center;">Horse Sands Fort</p>  <p style="text-align: center;">Leave to Port & Turn East</p>



ROWING DIRECTIONS & GUIDE FOR COXES

Stage	Description	Marker/Guide
	c) <i>Keep a look out ahead and astern. Ship wakes can build up near the fort. Keep 100 yards clear as you go round.</i>	
4	<p>HSF to Langstone Bar/Fairway Mark (LFM).</p> <p>a) <i>This leg requires a bit of navigation. There is an advantage to achieving a straight line.</i></p> <p>b) <i>You will not be able to see the LFM until you have completed about half this c2.3 nm leg.</i></p> <p>c) <i>Steer 060 magnetic (about ENE) and aim to leave the red and black Roway Mark about 400 yards to port.</i></p>	<p style="text-align: center;">Langstone Fairway Mark</p>  <p style="text-align: center;">Leave to Port & Turn North</p>
FINISH	<p>LFM to finish line: Turn North towards Langstone Harbour, leaving LBM to Port.</p> <p>a) <i>Keep off the Jetty but boats can use whole harbour entrance for final sprint to the finish line.</i></p> <p>b) <i>Keep a lookout for dredgers ahead and astern.</i></p>	<p style="text-align: center;">Yellow Triangles</p>  <p style="text-align: center;">FINISH Line</p>
Gig Recovery	<p>After finishing, please row back to beach at the ECA, keeping well clear of other boats still racing. Beach your boat south of the concrete slip.</p> <p>a) <i>Please report your safe return to the ECA racing hut.</i></p>	

NB: Alternatively, a clockwise direction route may be considered at ECA discretion, for safety reasons.



ROWING DIRECTIONS & GUIDE FOR COXES
Alternative Course in Langstone Harbour (Indicative Only)
If conditions are not suitable for the planned course in the Solent

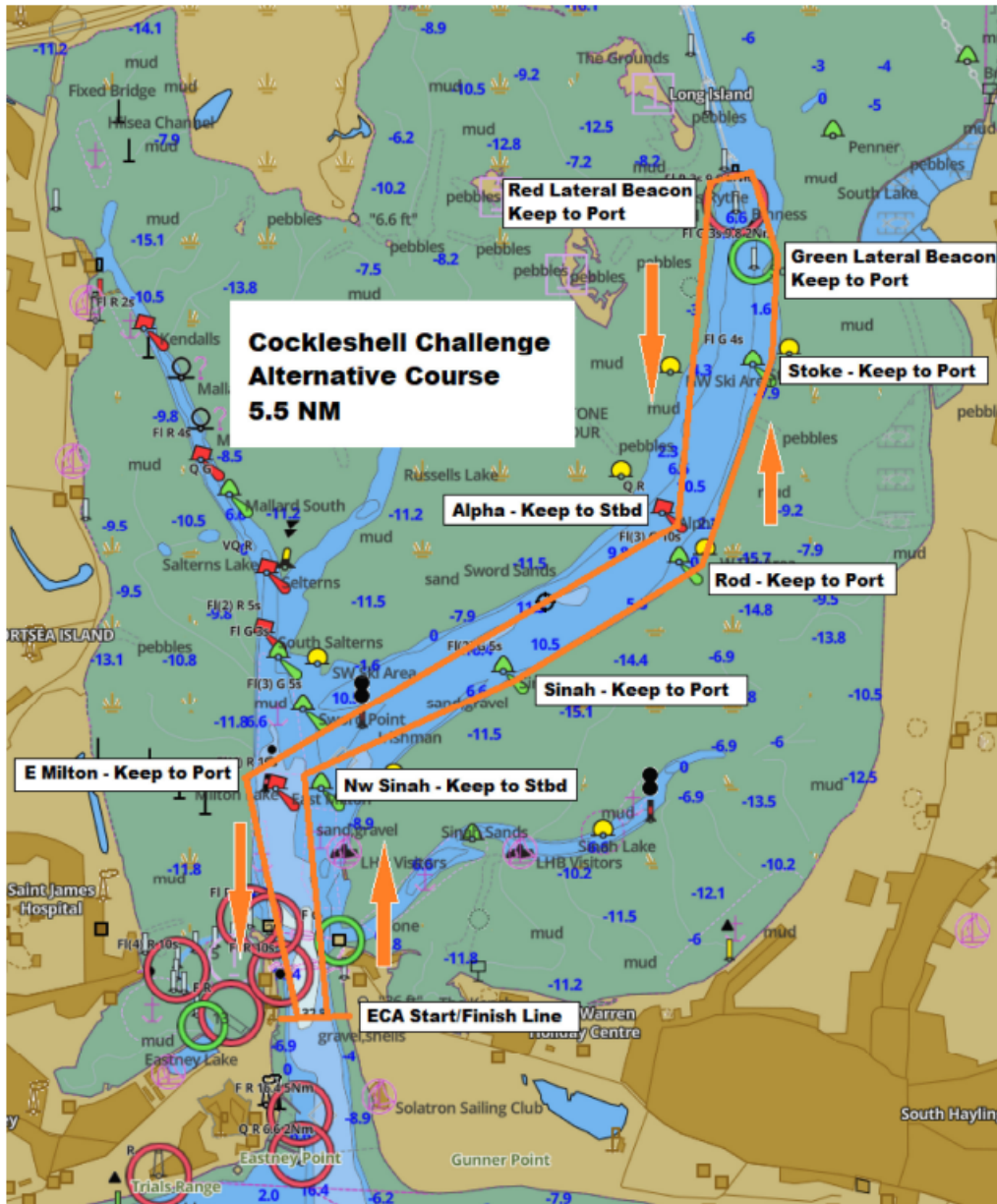


Figure 2 – Alternative Course (Derived from Admiralty Charts)